

<b>Product:</b>	Pet Infusion	<b>Harvest Source:</b>	Sugar Bottom Hemp Company
<b>Description:</b>	Hemp derived CBD rich whole plant extract with bacon flavor	<b>Cultivar:</b>	Peacemaker, Cascade Blend
<b>Unit Size:</b>	30 mL	<b>Batch ID:</b>	86590200146
<b>Serving Size:</b>	1 mL	<b>Production ID:</b>	PS200825323
<b>Product Code:</b>	W8MN-30	<b>DOM:</b>	25-Aug-20

Quality	Method	Specification	Result	
<b>Total CBD:</b>	C5210-HPLCUV (Internal)	> 250	<b>264</b>	PASS
<b>Total THC:</b>	C5210-HPLCUV (Internal)	< 0.30	<b>&lt;0.05</b>	PASS
<b>Appearance:</b>	ASTM E1627 - 11	Light amber viscous liquid		PASS
<b>Odor:</b>	ASTM E1627 - 11	Smokey		PASS
<b>Total Terpenes:</b>	C5933-GCMS (Internal)	Detectable (PPM)	30	PASS
<b>Minor Cannabinoids:</b>	C6198 LCMSMS (Internal)	Detectable (MG)	47	PASS
Safety	Method	Specification	Result	
<b>Water Activity</b>	D8196-18	< 0.600	0.296	PASS
<b>Solvents:</b>	C5923-GCMS (Internal)	USP 467		PASS
<b>Pesticides:</b>	C5838 LCMSMS/AOAC 2007.01	OAR333-007-0400/EPA		PASS
<b>Mycotoxins:</b>	C5838 LCMSMS/AOAC 2007.01	MDH Exhibit 6		PASS
<b>Heavy Metals:</b>	ICPMS (External Partner)	MDH Exhibit 4		PASS

Product of Vermont USA



Test Method: C5210 HPLC-UV (Internal)

Test Method: C5210 HPLC-UV (Internal)

Terpene Profile	Parts Per Million	Parts Per Million	Cannabinoid Potency	MG Per Unit	MG Per Serving	
a-Pinene	<2	Isoborneol	<2	CBD	264	8.81
Camphene	<2	Menthol	<2	CBDA	<14.03	<0.47
Sabinene	<2	endo-Borneol	<2	d9-THC	<14.03	<0.47
b-Pinene	<2	a-Terpineol	<2	THCA-A	<14.03	<0.47
b-Myrcene	<2	g Terpineol	<2	d8-THC	<1.4	<0.05
a-Phellandrene	<2	Nerol	<2	CBG	15.9	0.53
Carene	<2	Pulegone	<2	CBGA	<1.4	<0.05
a-Terpinene	<2	Geraniol	<2	CBN	<1.4	<0.05
D-Limonene	<2	Geranyl acetate	<2	CBNA	<1.4	<0.05
o-Cymene	<2	a-Cedrene	<2	CBC	19.9	0.66
Eucalyptol	<2	(E)-b-Famesene	<2	CBCA	<1.4	<0.05
b-Ocimene	<2	Caryophyllene	20	CBDV	7.9	0.26
gTerpinene	<2	a-Humulene	5	CBDVA	<1.4	<0.05
Terpinolene	<2	trans-Neradiol	<2	THCV	3.11	0.10
Sabinene Hydrate	<2	cis-Neradiol	<2	THCVA	<1.4	<0.05
Fenchone	<2	Valencene	<2	CBL	<1.4	<0.05
Linalool	2	Guaiol	<2			
Fenchol	<2	Caryophyllene Oxide	<2			
Isopulegol	<2	Cedrol	<2			
Camphor	<2	a-Bisabolol	2			

**Recommended Storage:** 20-25 ° C (68-77° F), Refrigerate for long term storage (> 3 months); avoid exposure to prolonged heat and light.

**Retest Date:** 1-Sep-22

**Product Information:** Hemp derived whole plant tinctures are intended for oral ingestion; recommended serving size is 0.5 - 1.0 mL.

Approved By:



Representative: Keith Griswold, MS

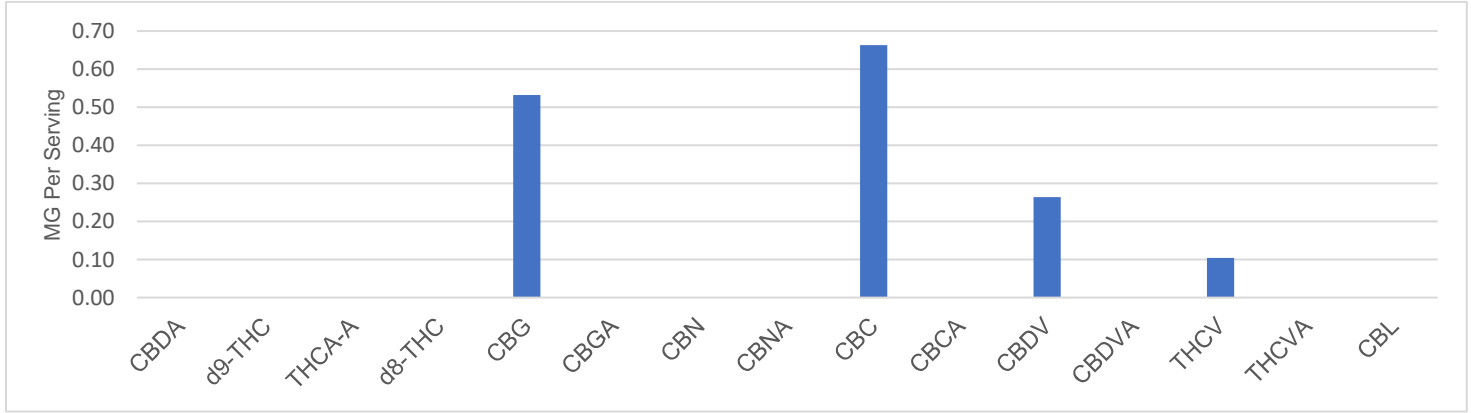
Title: Chief Scientific Officer

Date: 27-Sep-20

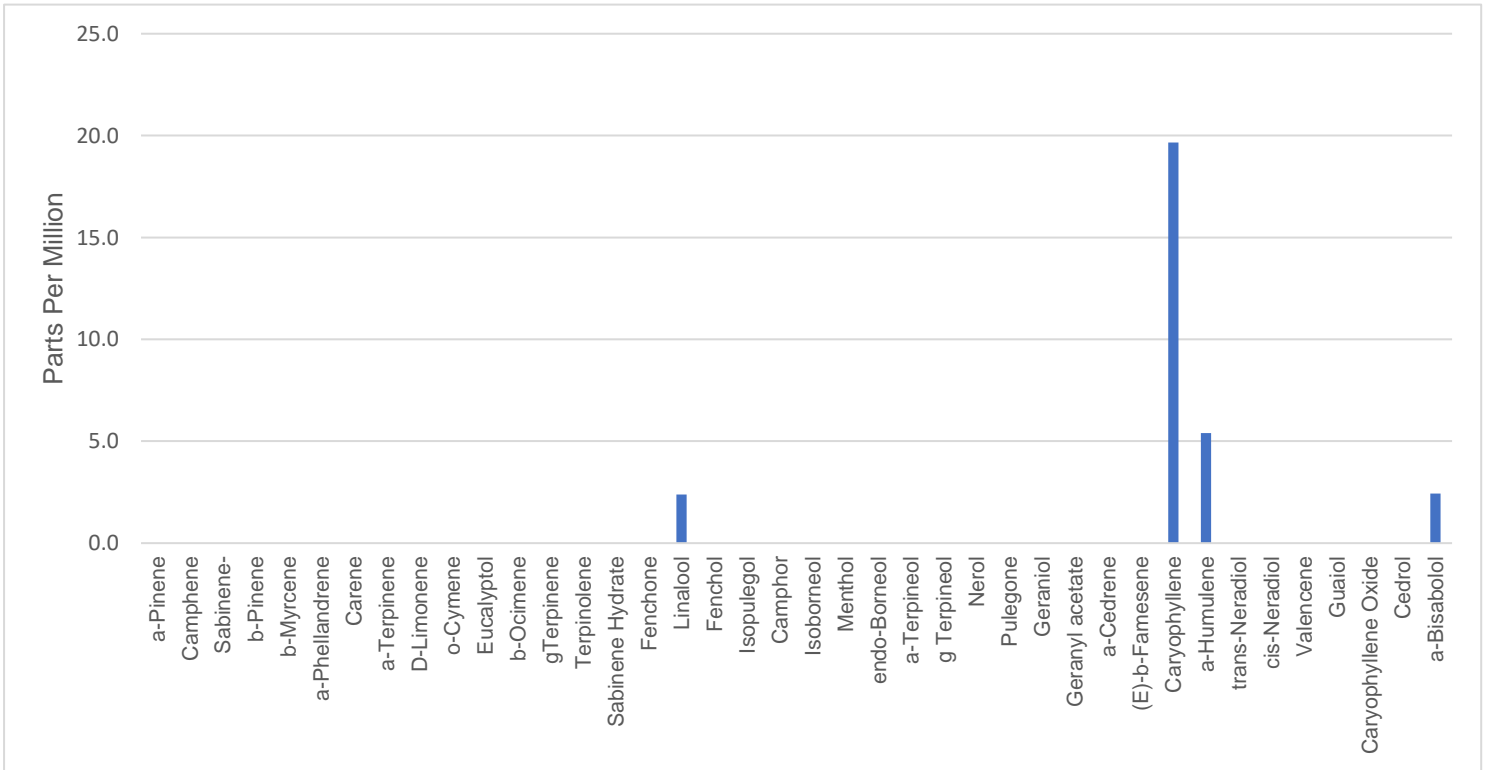


Data reported in this document pertains only to this batch and as sampled according to QMT.PLN.01.03. All rights are reserved to the producer and distributor of this product. Unauthorized reproduction of this data is prohibited. All testing is performed with internally developed test methods that have been verified or validated in accordance to AOAC and ICH guidelines. Test method performance is monitored through control charting.

**Batch ID:** 86590200146      **Parameter:** Cannabinoid Potency  
**DOM:** 25-Aug-20      **Test Method:** C6198 LCMSMS (Internal); LOQ = 0.005%



**Batch ID:** 86590200146      **Parameter:** Terpene Profile  
**DOM:** 25-Aug-20      **Test Method:** C5933 GCMS (Internal); Static Headspace; LOQ = 2 ppm



\*Terpenes represented of hemp derived before any flavouring is added.

**Approved By:**



**Representative:** Keith Griswold, MS

**Title:** Chief Scientific Officer

**Date:** 27-Sep-20



# Certificate of Analysis

## Product Specifications

**Batch ID:** 86590200146      **Parameter:** Residual Solvents  
**DOM:** 25-Aug-20      **Test Method:** C5923 GCMS (Internal); Static Headspace

Analyte	Units	Reporting Limit	Action Limit	Result	Status
Methanol	%w/w	0.05	0.30	< 0.05	PASS
Pentane	%w/w	0.003	0.50	< 0.003	PASS
Ethanol	%w/w	0.05	0.50	<0.05	PASS
Acetone	%w/w	0.05	0.50	< 0.05	PASS
Isopropanol	%w/w	0.05	0.50	<0.05	PASS
Acetonitrile	%w/w	0.003	0.04	<0.003	PASS
n-Hexane	%w/w	0.003	0.03	<0.003	PASS
Tetrahydrofuran	%w/w	0.003	0.07	<0.003	PASS
Chloroform	%w/w	0.003	0.01	<0.003	PASS
n-Heptane	%w/w	0.02	0.50	<0.02	PASS
Toluene	%w/w	0.003	0.09	<0.003	PASS
m & p Xylene	%w/w	0.003	0.22	<0.003	PASS

\*Action limit based on USP 467 requirements for residual solvents Class I, II and III.

**Batch ID:** 86590200146      **Parameter:** Mycotoxins  
**DOM:** 25-Aug-20      **Test Method:** C5838 LCMSMS/AOAC 2007.01

Analytes	Units	Reporting Limit	Action Limit	Results	Status
Mycotoxins	ppb	n/a	20	< 20	PASS

**Batch ID:** 86590200146      **Parameter:** Pesticides  
**DOM:** 25-Aug-20      **Test Method:** C5838 LCMSMS/AOAC 2007.01

Analyte	Units	Reporting Limit	Action Limit	Results	Status
Bifenazate	ppm	0.10	0.20	<0.10	PASS
Etoxale	ppm	0.05	0.20	< 0.05	PASS
Imazalil	ppm	0.05	0.20	<0.05	PASS
Imidacloprid	ppm	0.05	0.40	<0.05	PASS
Myclobutanil	ppm	0.05	0.20	<0.05	PASS
Spiromesifen	ppm	0.05	0.20	<0.05	PASS
Trifloxystrobin	ppm	0.05	0.20	<0.05	PASS

Reporting limit for all mycotoxins screened is 2 parts per billion (ppb); Action level, maximum level allowed by EPA/Orgeon Regulations

**Batch ID:** 86590200146      **Parameter:** Heavy Metals  
**DOM:** 25-Aug-20      **Test Method:** PMS (External Partner)

Analyte	Units	Reporting Limit	Action Limit	Results*	Status
As	ppb	0.1	200	31	PASS
Hg	ppb	0.1	100	< 0.1	PASS
Cd	ppb	0.1	200	48.5	PASS
Pb	ppb	0.1	500	73	PASS

\*Derived from whole flower prior to extraction and formulation

Approved By:



Representative: Keith Griswold, MS

Title: Chief Scientific Officer

Date: 27-Sep-20

